



# NORWEST

MANUFACTURING

71 SOUTH 215 WEST-RUPERT, ID- PHONE: (208) 436-1770 - FAX: (208) 436-1776



# *Norwest Pivot Track Filler*





# NORWEST

## MANUFACTURING

71 SOUTH 215 WEST-RUPERT, ID- PHONE: (208) 436-1770 - FAX: (208) 436-1776

### **NORWEST PIVOT TRACK FILLER**

This manual contains valuable information about your new *Norwest Pivot Track Filler*. It has been carefully prepared to give you helpful suggestions for operating, adjusting, and servicing of your equipment. If assistance is needed to understand the information within this manual, please contact Norwest Manufacturing.

Keep this information in a convenient place for quick and easy reference. You have purchased dependable and sturdy equipment, but only with proper care, operation and maintenance can you expect to receive the service and long life designed and built into it. Give this equipment proper attention during slack periods and it will always be ready when you need it.

Norwest Manufacturing proudly displays the FEMA seal of quality on this and other equipment manufactured by our company. All our equipment must meet the following standards.

1. The company will provide replacement parts promptly and at a fair price for a maximum of ten years on all machines from the date of manufacture to which the seal will be affixed so long as the company produces that particular piece.
2. The majority of Norwest's farm equipment distribution is through servicing bona fide retailers and/or wholesalers with a majority of their sales related to agriculture.
3. The Company will reproduce the FEMA seal on a majority of its farm and trade press advertisements and is entitled to reproduce said seal on its company letter head, sales literature, operators manuals, and parts books.
4. The company will apply the FEMA seal only to new machines either accompanied by repair parts lists or by notification that a parts list is available.
5. The seal will be attached only to new machines that carry a written warranty.
6. Norwest Manufacturing will discontinue use of the seal, in any form, upon notification by the Farm Equipment Manufacturers Association that it has violated any terms of this agreement.



## **LIMITED WARRANTY**

Norwest Manufacturing warrants, to the original retail customer, the new Norwest equipment identified in this owners manual to be free of defects in material and workmanship. Any part of said equipment that in Norwest's judgment shows evidence of such defects will be repaired without charge, provided that the failure of part(s) shall have occurred within twelve (12) months from the date of delivery of said equipment to the retail customer. Tires, batteries, engines, electrical and hydraulic components and other trade accessories may be warranted by their respective manufacturers and those warranties, if any, are hereby extended to the retail customer. Expendable components such as blades, teeth, chain, sprockets, springs, sweeps and the like are excluded from this warranty.

The retail customer must pay the transportation cost to and from the Norwest dealer's service shop for warranty service. Warranty service will be performed by the Norwest dealer from whom the equipment was purchased, in his service shop and during his regularly scheduled days and hours of operation.

All Norwest obligations under this warranty shall be terminated if the equipment is modified or altered in any way not approved in writing by Norwest, if repair parts other than genuine Norwest repair parts have been used, or if the equipment has been subjected to misuse, neglect, accident, improper maintenance or improper protection in storage.

Norwest reserves the right to make improvements in design or changes in specifications at any time without incurring any obligation to owners of equipment previously sold.

No agent or person has the authority to alter, add to or waive the above warranties which are agreed to be the only warranties, representations or promises, expressed or implied, as to the quality or performance of the products covered and which do not include any implied warranty of merchantability or fitness. In no event will Norwest be liable for incidental or consequential damages or injuries, including, but not limited to, loss of crops, loss of profits, rental of substitute equipment or other commercial loss.

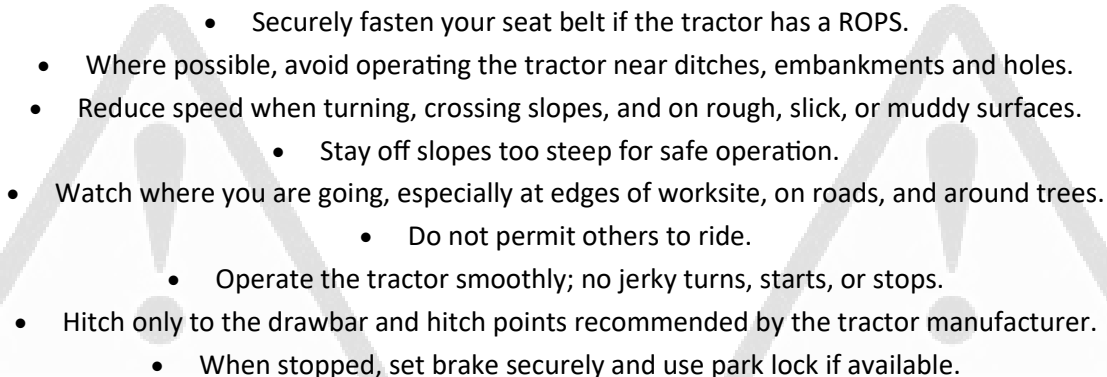
## **SAFETY**

Most accidents, whether they occur in industry, on the farm, at home, or on the highway, are caused by failure of some individual to follow simple and fundamental safety rules or precautions.

*Study and heed the following safety rules and precautions when operating your tractor.  
Personal injury may result if these precautions are ignored.*

## **CAUTION!**

### **WHEN OPERATING YOUR TRACTOR**

- 
- Securely fasten your seat belt if the tractor has a ROPS.
  - Where possible, avoid operating the tractor near ditches, embankments and holes.
  - Reduce speed when turning, crossing slopes, and on rough, slick, or muddy surfaces.
    - Stay off slopes too steep for safe operation.
  - Watch where you are going, especially at edges of worksite, on roads, and around trees.
    - Do not permit others to ride.
    - Operate the tractor smoothly; no jerky turns, starts, or stops.
  - Hitch only to the drawbar and hitch points recommended by the tractor manufacturer.
    - When stopped, set brake securely and use park lock if available.

Track Filler 1200-3

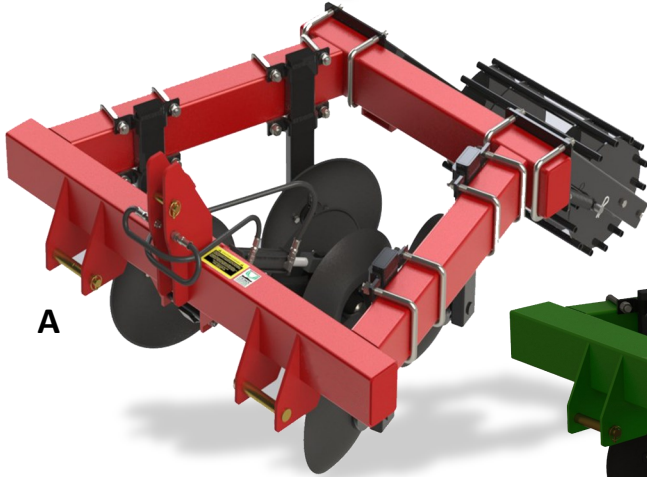


## **CAUTION!**

### **WHEN OPERATING YOUR TRACTOR**

- Stop engine, disengage PTO, and wait for all movements to stop before attempting to unclog, clean, adjust or service this machine unless otherwise recommended in the “Operations Manual”.
  - Always lower track filler to the ground when not in use.
- Do not unhitch track filler from tractor until supporting stands are in place and secured.
  - Keep hands, feet, and clothing away from moving parts.
  - Keep off equipment unless an operator’s seat or platform is provided.
    - Keep others off equipment.
  - Make sure everyone is clear of machine before starting tractor engine or operating track filler.
  - Use extreme care when operating close to ditches, fences or on hillsides.
- Before moving track filler on highway, make sure the triangular SMV (Slow Moving Vehicle) sign is free of dust or dirt, and make sure the propelling vehicles’ flashing lights are operating properly. In this regard, check local governmental regulations.
- Before transporting track filler on highway, all transport pins must be in place, to prevent accidental lowering of the track filler and components.
- When assembling track filler, be sure that supporting and lifting devices are stable and have sufficient capacity to withstand the weight of the track filler during assembly.
- Never attach cables, chains, or ropes to track filler for the purpose of lifting, towing, or pulling. Personal injury or damage of equipment may result.
  - Never stand or work under the track filler without taking precautions to prevent accidental lowering.
- Be alert to electrical wires and other overhead obstacles when transporting the track filler.
  - Be careful when working around the coulter blades. The edge of the coulter is sharp enough to cause injury if accidentally contacted.
  - The maximum towing speed for the Norwest Pivot Track Filler is 20 MPH.

# Track King & Queen



A



B



C

OPTION	DESCRIPTION & PART #
A	Light Duty Track Queen w/ Cage Packer = <b>OR400-WP</b>
B	Medium Duty Track King w/ Cage Packer = <b>OR600-WP</b>
C	Spiral Packer Assembly = <b>OR600-SP</b>

## AVAILABLE PIVOT TRACK FILLER OPTIONS

	<b>OR688 Track King</b>	<b>OR600 Track King</b>	<b>OR400 Track Queen</b>
<b>DUTY RATING</b>	<b>HEAVY DUTY</b> <i>for more Rocky Conditions</i>	<b>MEDIUM DUTY</b>	<b>LIGHT DUTY</b>
<b>HUB</b>	GQ-888H	GQ-633H	GQ-633H
<b>HUB CAPACITY</b>	3560#	1500#	1500#
<b># OF LEGS</b>	6	6	4

## PACKER ASSEMBLY OPTIONS

### NORWEST MANUFACTURING PART NUMBERS FOR PACKER ASSEMBLY OPTIONS

<b>WITH CAGE PACKER ASSEMBLY</b>	OR688-WP	OR600-WP	OR400-WP
<b>WITH SPIRAL PACKER ASSEMBLY</b>	OR688-WSCP	OR600-WSCP	OR400-WSCP
<b>WITHOUT PACKER ASSEMBLY</b>	OR688-NP	OR600-NP	OR400-NP

## COLOR OPTIONS

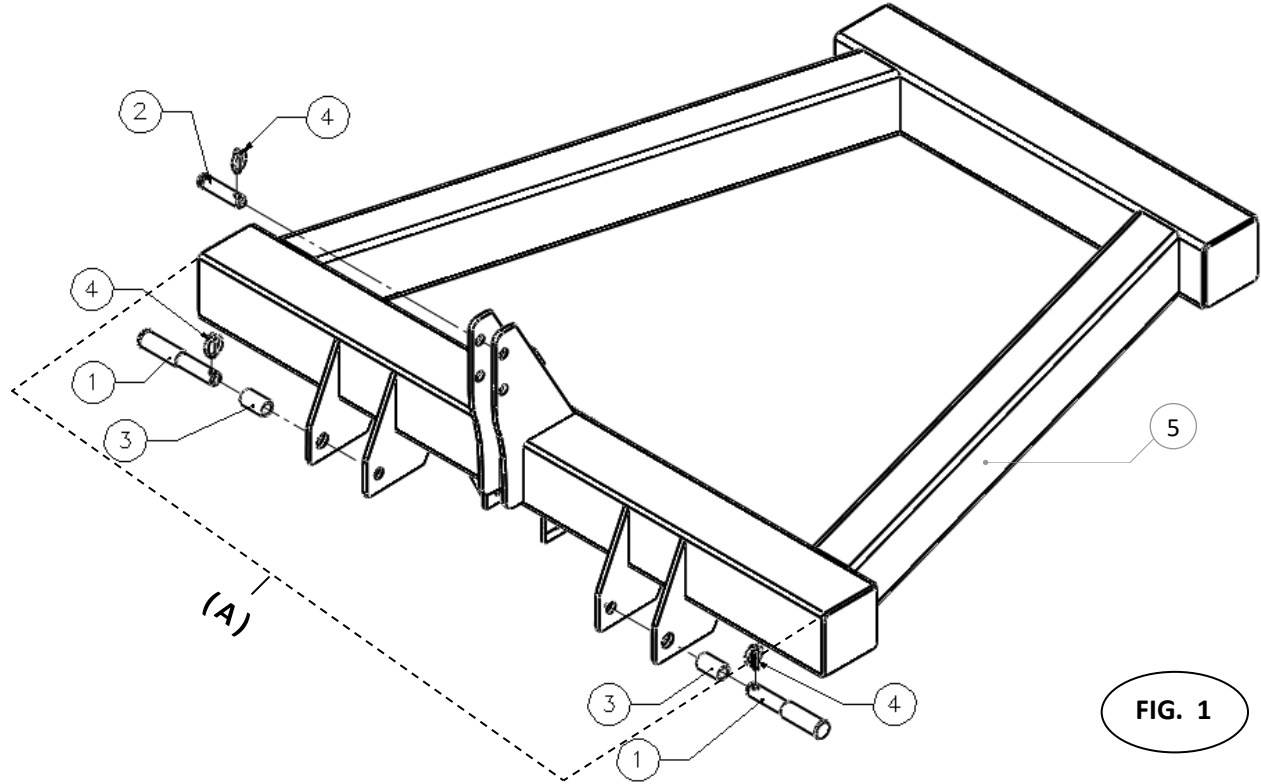
ALL TRACK FILLERS ARE AVAILABLE IN EITHER RED or GREEN

Track Filler 1200-5

**FIG. 1**

## NORWEST TRACK FILLER FRAME OPTIONS

NORWEST BASE FRAME FOR OR688, OR600 & OR400 TRACK FILLERS, WITH PINS



**FIG. 1**

TRACK FILLER FRAMES			
	<i><b>OR688 Track King</b></i>	<i><b>OR600 Track King</b></i>	<i><b>OR400 Track Queen</b></i>
<b>NORWEST PART #</b>	OR600-F	OR600-F	OR400-F
<b>DIMENSION (A)</b>	80-1/4"	80-1/4"	69-7/8"
TRACK FILLER FRAME REFERENCE KEY			
REFERENCE #	PART #	DESCRIPTION	REQUIRED PCS.
1	21293	HH CAT. 2 & 3 COMBO LIFT PIN WITH 9" USABLE LENGTH	2
2	21261	HH TOP LINK PIN	1
3	21197	HH LIFT ARM BUSHING CAT. 2 & 3, LONG. 1-7/16" X 1-1/8" X 2-3/4"	2
4	21938	HH 7/16" LYNCH PIN, LONG	3
5	OR600-F/OR400-F	NORWEST BASE FRAME FOR TRACK KING/QUEEN	1

Track Filler 1200-6

FIG. 2

## NORWEST TRACK FILLER LEG OPTIONS

PIVOT TRACK FILLER LEG FOR OR688, OR600 & OR400 TRACK FILLERS  
COMPLETE WITH DSF2260 DISC BLADE

Track Filler Leg Assembly with GQ-888H Hub  
for OR688 Track Fillers

Track Filler Leg Assembly with GQ-633H Hub  
for OR600 & OR400 Track Fillers

FIG. 2a

Norwest Track Filler Leg Assembly  
Complete w/Blade

Norwest Part #  
OR688-TFL-WB

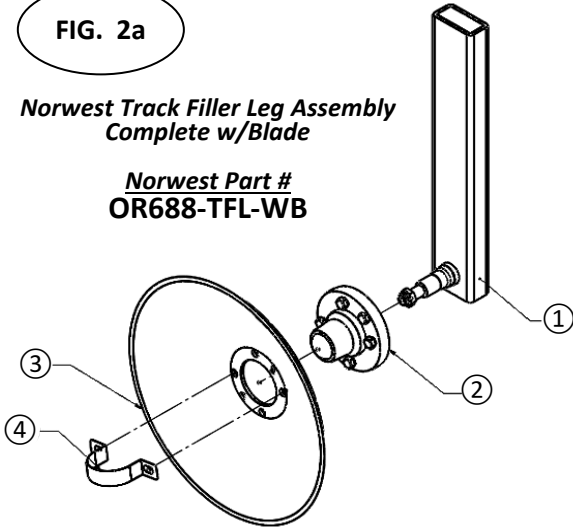
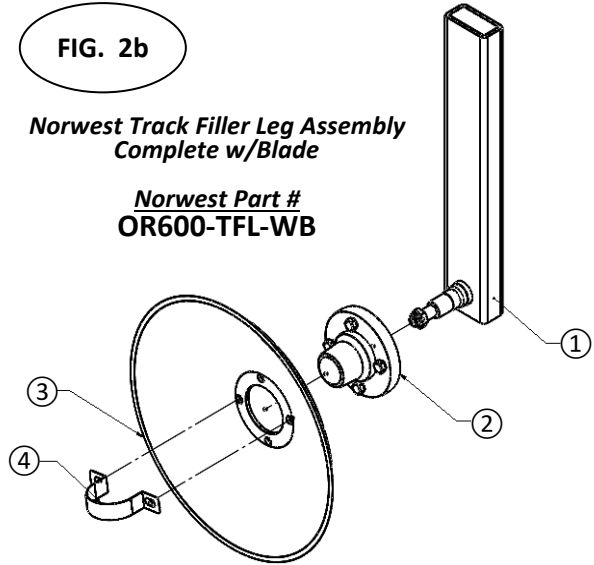


FIG. 2b

Norwest Track Filler Leg Assembly  
Complete w/Blade

Norwest Part #  
OR600-TFL-WB



### TRACK FILLER LEG REFERENCE KEY

REF. #	DESCRIPTION	OR688	OR600	OR400	REQUIRED PCS. (PER LEG)
		Track King	Track King	Track Queen	
NORWEST PART #		NORWEST PART #	NORWEST PART #	NORWEST PART #	
1	TRACK FILLER LEG WITH SPINDLE LESS HUB & BLADE	OR688-TFL	OR600-TFL	OR600-TFL	1
2	HUB COMPLETE. 3560# CAP. WITH 6 BOLT ON 6" BOLT CENTER & 4.62" PILOT HOLE	GQ-888H	—	—	1
	HUB COMPLETE. 1500# CAP. WITH 4 BOLT ON 5" BOLT CENTER & 3.62" PILOT HOLE	—	GQ-633H	GQ-633H	1
3	SMOOTH FLAT CENTER DISC BLADE. 22" X 6MM WITH 888 HUB PATTERN	DSF2260-888	—	—	1
	SMOOTH FLAT CENTER DISC BLADE. 22" X 6MM WITH 633 HUB PATTERN	—	DSF2260-633	DSF2260-633	1
4	STRAP FOR DUST CAP FOR 888 TRACK FILLER HUB	OR600-TFL-888ST	—	—	1
	STRAP FOR DUST CAP FOR 633 TRACK FILLER HUB	—	OR600-TFL-STRAP	OR600-TFL-STRAP	1

Track Filler 1200-7

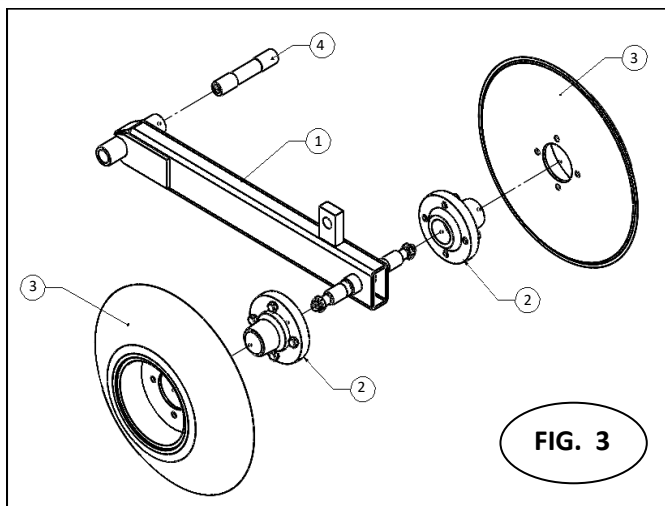
**FIG. 3**

# NORWEST TRACK FILLER GUIDE LEG ASSEMBLY

GUIDE LEG ASSEMBLY COMPLETE WITH HUBS, BUSHINGS & GUIDE WHEELS

**Norwest Track Filler  
Guide Leg Assembly; Complete**

**Norwest Part #  
OR600-GLA**



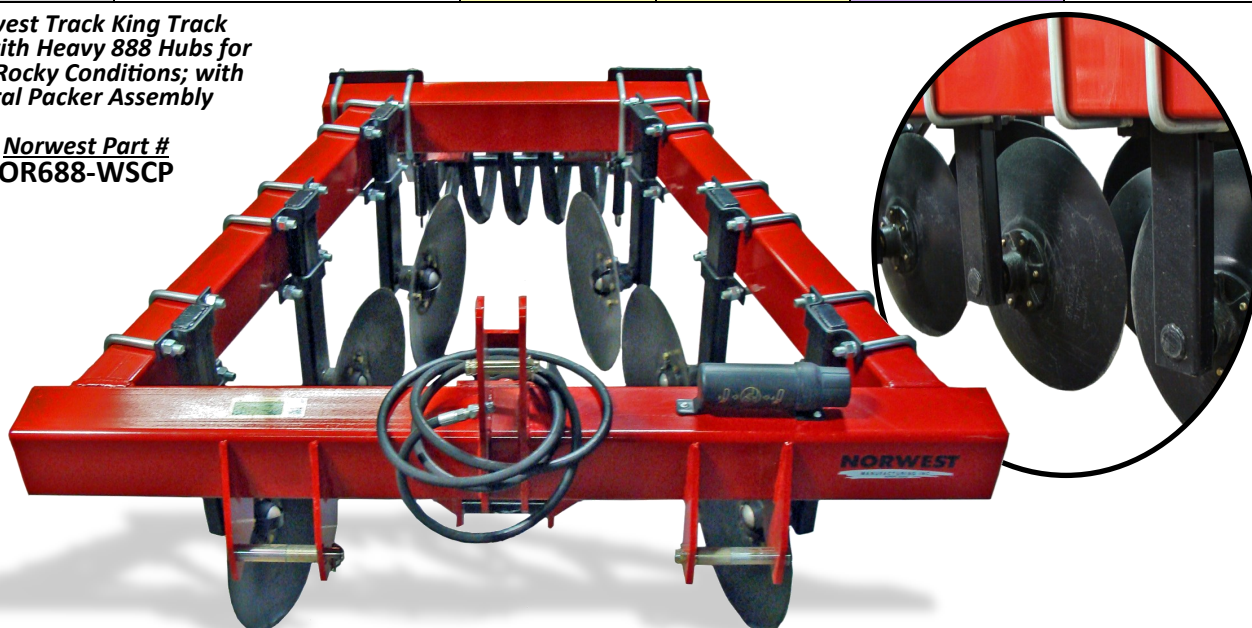
**FIG. 3**

## GUIDE LEG ASSEMBLY REFERENCE KEY

REF. #	DESCRIPTION	GUIDE LEG ASSEMBLY REFERENCE KEY			REQUIRED PCS. (PER ASSEMBLY)
		OR688 Track King	OR600 Track King	OR400 Track Queen	
1	GUIDE WHEEL LEG; LESS HUBS AND BUSHING FOR OR600-GW	NORWEST PART # OR600-GWL	NORWEST PART # OR600-GWL	NORWEST PART # OR600-GWL	1
2	HUB COMPLETE. 1500# CAP. WITH 4 BOLT ON 5" BOLT CENTER & 3.62" PILOT	GQ-633H	GQ-633H	GQ-633H	2
3	STEEL WHEEL; WELDED FOR TRACK KING & QUEEN TRACK FILLERS	OR600-GW	OR600-GW	OR600-GW	2
4	7" INSIDE BUSHING FOR OR600-GWL GUIDE WHEEL	OR600-GWBS	OR600-GWBS	OR600-GWBS	1

**Norwest Track King Track Filler with Heavy 888 Hubs for More Rocky Conditions; with Spiral Packer Assembly**

**Norwest Part #  
OR688-WSCP**



Track Filler 1200-8



FIG. 4

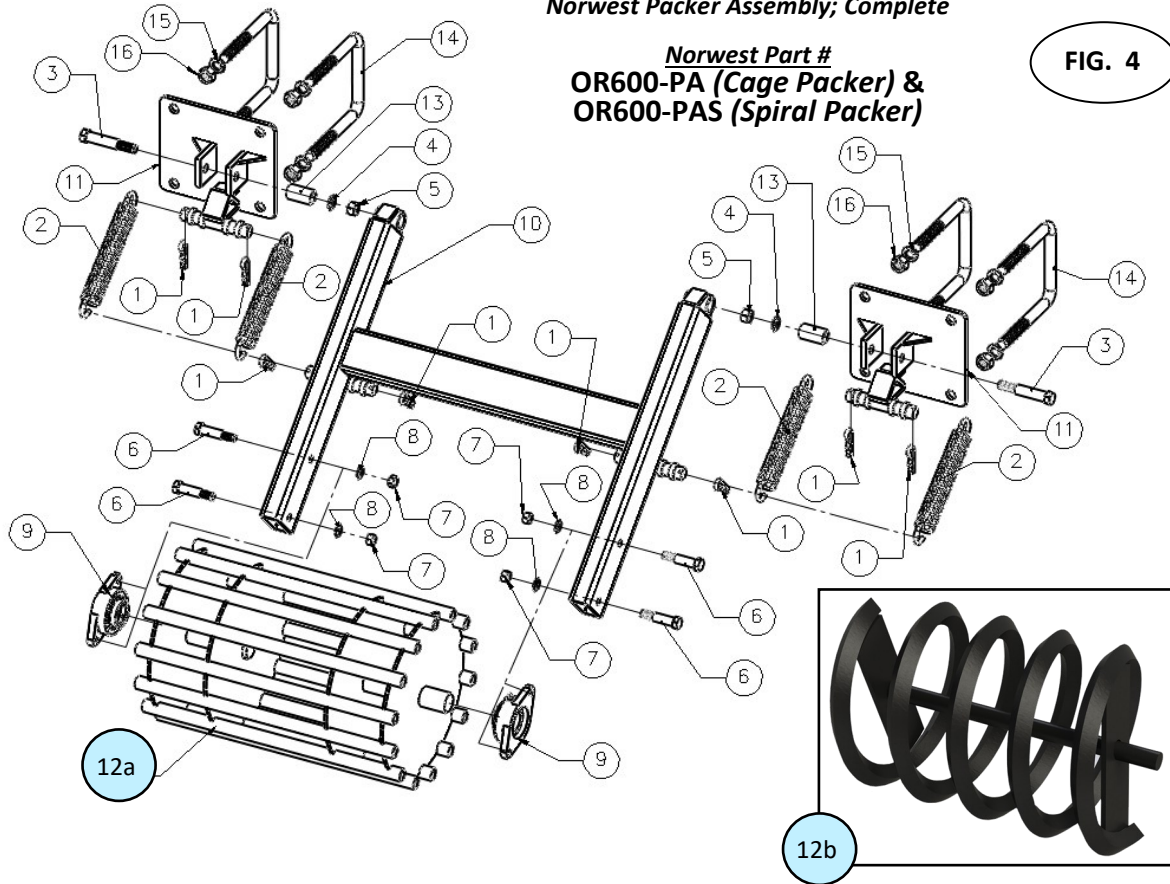
# NORWEST PACKER ASSEMBLY OPTIONS

CAGE & SPIRAL PACKER ASSEMBLIES FOR OR688, OR600 & OR400 TRACK FILLERS  
(U-BOLTS & FASTENERS SOLD SEPERATELY)

Norwest Packer Assembly; Complete

Norwest Part #  
OR600-PA (Cage Packer) &  
OR600-PAS (Spiral Packer)

FIG. 4



## PACKER ASSEMBLY REFERENCE KEY

REFERENCE #	PART #	DESCRIPTION	REQUIRED PCS.
1	60870	HH HITCHPIN (HAIR PIN) CLIP	8
2	OR600-814	EXTENSION SPRING FOR TRACK FILLERS	4
3	FHB34500G5	3/4" X 5" GRADE 5 HEX BOLTS	2
4	FLW34	3/4" LOCK WASHER	2
5	FHN34	3/4" HEX NUT	2
6	FHB58350G5	5/8" X 3-1/2" GRADE 5 HEX BOLT	4
7	FHN58	5/8" HEX NUT	4
8	FLW58	5/8" LOCK WASHER	4
9	UCFT209-28	BEARING FOR TRACK FILLER	2
10	OR600-PF	PACKER FRAME	1
11	OR600-PCB	CLAMP BRACKET TO FIT PACKERS	2
12a	OR600-SCP	SQUIRREL CAGE PACKER, CRUSHER FOR NORWEST PIVOT TRACK FILLERS	1
12b	OR600-SP	SPIRAL PACKER, CRUSHER FOR NORWEST PIVOT TRACK FILLERS	
13	OR600-PFBS	2.5" INSIDE BUSHING USED ON OR600-PF PACKER FRAME	2
14	16-03204	7/8" U-BOLT FOR 7" X 7" TOOL BAR	4
15	FLW78	7/8" LOCK WASHER	8
16	FLN78	7/8" HEX NUT	8

Track Filler 1200-9

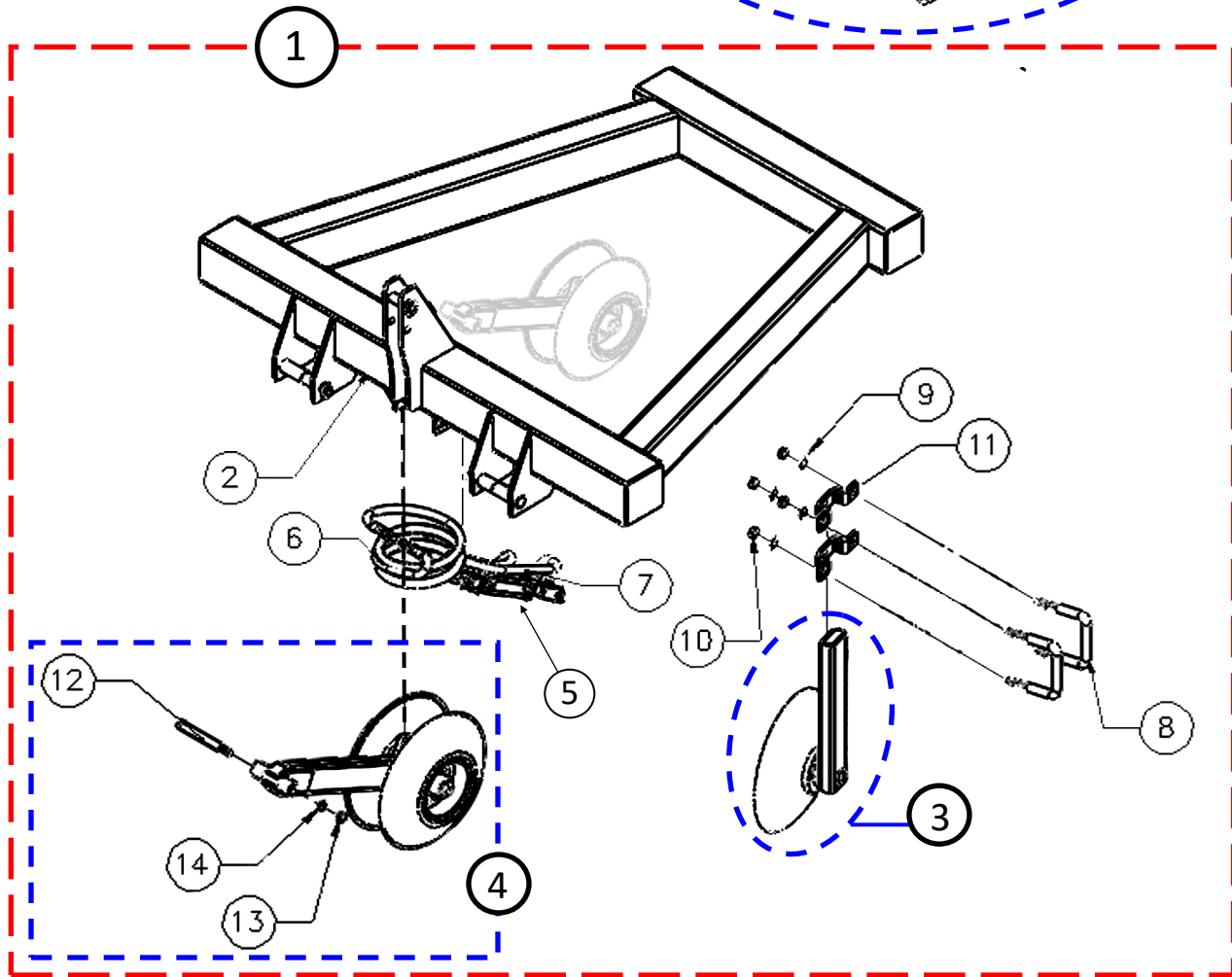
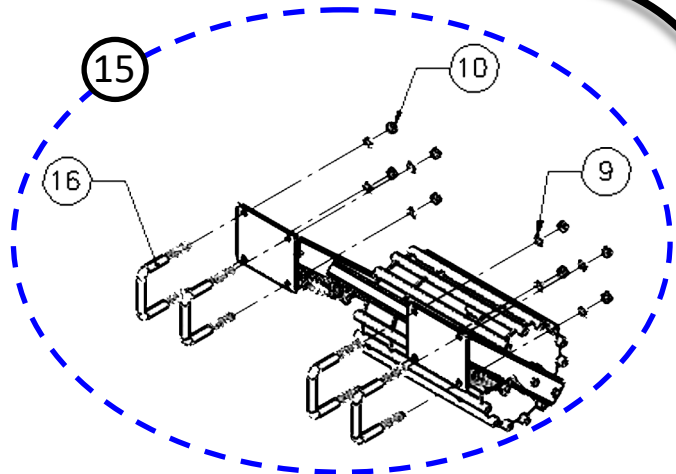
FIG. 5

# NORWEST TRACK FILLER with PACKER ASSEMBLY

NORWEST PART #: OR600-WP (SHOWN)

FIG. 5

The Norwest Packer Assembly can be sold separately and may be added to *any* Norwest Track Filler at *any* time. Either the *Cage Packer* or the *Spiral Packer* will mount to the packer frame. **U-Bolts & Fasteners Sold Separately.**



Track Filler 1200-10



## KEY for OR600-WP PIVOT TRACK FILLER with SQUIRREL CAGE PACKER ASSEMBLY

EXPLODED VIEW SHOWN ON Pg. 10

OR600-WP REFERENCE KEY						
REF. #	DESCRIPTION	OR688 Track King	OR600 Track King	REQUIRED PCS. <i>(PER ASSEMBLY)</i>	OR400 Track Queen	REQUIRED PCS. <i>(PER ASSEMBLY)</i>
		NORWEST PART #	NORWEST PART #		NORWEST PART #	
1	NORWEST PIVOT TRACK FILLER LESS PACKER DEVICE	OR688-NP	OR600-NP	1	OR400-NP	1
2	NORWEST BASE FRAME FOR TRACK KING WITH PINS	OR600-F	OR600-F	1	OR400-F	1
3	PIVOT TRACK FILLER LEG COMPLETE WITH DSF2260-888 DISC BLADE <i>(Page 7; Fig. 2a)</i>	OR688-TFL-WB	—	6	—	—
	PIVOT TRACK FILLER LEG COMPLETE WITH DSF2260-633 DISC BLADE <i>(Page 7; Fig. 2b)</i>	—	OR600-TFL-WB	6	OR600-TFL-WB	4
4	GUIDE LEG ASSEMBLY COMPLETE WITH HUBS, BUSHING & GUIDE WHEELS <i>(Page 8; Fig. 3)</i>	OR600-GLA	OR600-GLA	1	OR600-GLA	1
5	CROSS DB-ASAE 2" X 8" TIE ROD CYLINDERS	208DB-ASAE	208DB-ASAE	1	208DB-ASAE	1
6	ASSEMBLY: 3/8" X 91" ZWIRE HOSE WITH 3/8" M.NPT & 9/16" NF.11C	OR600-HYD1	OR600-HYD1	1	OR600-HYD1	1
7	ASSEMBLY: 3/8" X 103" ZWIRE HOSE WITH 3/8" M.NPT & 9/16" NF.11C	OR600-HYD2	OR600-HYD2	1	OR600-HYD2	1
8	U-BOLT 7/8" FOR 7" X 5" TOOL BAR; 7" UP X 7-1/8" LONG	16-00204	16-00204	12	16-00204	8
9	7/8" LOCK WASHER	FLW78	FLW78	32	FLW78	16
10	7/8" HEX NUT	FHN78	FHN78	32	FHN78	16
11	7/16" X 2" TRACK FILLER BAR STRAP FOR LEG	OR600-STRAP	OR600-STRAP	12	OR600-STRAP	8
12	3/4" X 9" HEX BOLT	FHB34900G5	FHB34900G5	1	FHB34900G5	1
13	3/4" HEX NUT	FHN34	FHN34	1	FHN34	1
14	3/4" LOCK WASHER	FLW34	FLW34	1	FLW34	1
15	TRACK KING CAGE PACKER ASSEMBLY WITH BRACKETS & U-BOLTS <i>(Page 9; Fig. 4)</i>	OR600-PA	OR600-PA	1 <i>(OPTIONAL)</i>	OR600-PA	1 <i>(OPTIONAL)</i>
16	U-BOLT 7/8" FOR 7" X 7" TOOL BAR; 7" UP X 9-1/8" LONG	16-03204	16-03204	4	16-03204	4

Track Filler 1200-11



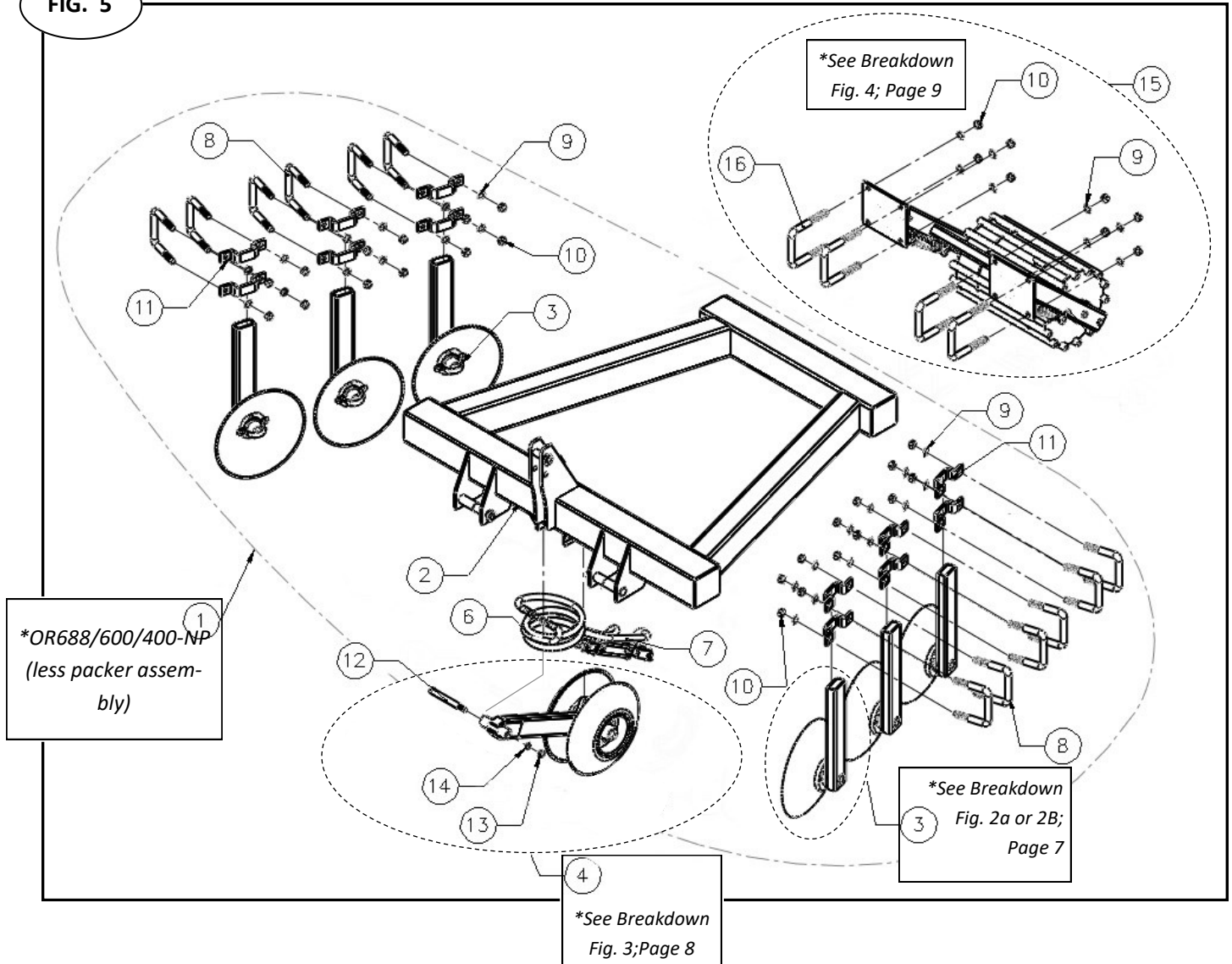
# NORWEST

## MANUFACTURING

71 SOUTH 215 WEST-RUPERT, ID- PHONE: (208) 436-1770 - FAX: (208) 436-1776



FIG. 5



## *“Stop the Pivot Monster in It’s Tracks”*

Norwest Manufacturing  
71 South 215 West  
Rupert, ID 83350  
Phone: (208) 436-1770  
Fax: (208) 436-1776  
[www.norwest-mfg.com](http://www.norwest-mfg.com)